

✓ Surveyed

✓ Documented

✓ Reported

Features:

- View / Log 6 Particle Sizes Simultaneously
- 0.3 - 25 μm
- 0.1 CFM (2.9 LPM) Flow Rate
- Optional $\mu\text{g}/\text{m}^3$ Concentration Mode
- Touch Screen Interface
- Removable / Rechargeable Li-Ion Battery
- Optional Temperature/Relative Humidity Probe
- Internal Audible Alarm
- On-board Memory (stores 3,000 samples)
- Belt clip for walk-thru surveys or attachment to WolfPack™ Area Monitors
- 2-Year Warranty
- Supplied with GrayWolf's WolfSense® PC Software for data download and analysis
- Optional WolfSense ARG Automated Report Generation Software
- Interfaces to GrayWolf's DirectSense®, WolfPack and AdvancedSense™ Systems for Enhanced Logging and Expanded Features

Benefits:

- Easy to Use (User-Friendly Interface)
- Expands your GrayWolf DirectSense, WolfPack, and AdvancedSense parameters
- Low Cost of Ownership



Use the GW-3016 as a stand-alone particle counter, plug it into a mobile computer or into a sophisticated WolfPack/AdvancedSense system for simultaneous connection with GrayWolf's DirectSense probes.

- Ergonomically designed and lightweight, the GrayWolf GW3016 is the most advanced handheld particle counter on the market.
- Easily download data from the GW3016 using the included WolfSense PC Software to create high quality trend/bar graphs/tables, use WolfSense's advanced organizational features or simply export to Microsoft Excel®.
- Optionally add Advanced Report Generator software for extremely efficient, automated reporting of particle count data.
- Offering 6 channels of simultaneous particle counting, the GW3016 displays both cumulative and differential particle count data on its easy-to-read 3.8" (9.65 cm) touch screen.
- Alternate displayed/logged readings from particle counts to approximate mass concentration ($\mu\text{g}/\text{m}^3$) with the optional model GW-3016A.
- Monitor particulate levels even in those "hard-to-reach" areas where two-handed operation is unsafe.

GW-3016

6-Channel Particle Counter



GRAYWOLF®
SENSING SOLUTIONS
PH. 1-203-402-0477
FAX: 1-203-402-0478

EMAIL:
SALESTEAM@GRAYWOLFSENSING.COM

WEBSITE:
WWW.GRAYWOLFSENSING.COM



GW-3016

6-channel Particle Counter

Specifications: GW3016

Size Range: 0.3 - 25.0 µm
Channel Sizes: Standard: 0.3, 0.5, 1.0, 2.5, 5.0, 10.0 µm
 Optional: 0.3, 0.5, 1.0, 3.0, 5.0, 10.0 µm
 Optional: 0.3, 0.5, 0.7, 1.0, 2.5, 5.0 µm
 Optional: 0.3, 0.5, 0.7, 1.0, 2.0, 5.0 µm
 Optional: 0.3, 0.5, 1.0, 5.0, 10.0, 25.0 µm
Flow Rate: 0.1 CFM (2.83 LPM)
Counting Efficiency: 50% @ 0.3 µm; 100% for Particles >0.45 µm (per JIS)
Laser Source: Laser Diode
Zero Count Level: <1 Count / 5 minutes (per JIS)
Concentration Limits: 4,000,000 Particles / ft³ @ 5% Coincidence Loss
Calibration: NIST Traceable
Count Modes: Automatic, Manual, Beep, Concentration, Cumulative/Differential
Data Storage (on-board): 3,000 Sample Records, up to 200 user-defined, Alpha-numeric location labels, Rotating Buffer (includes particle and environmental data, plus location and time)
Communication Modes: RS-232 via RJ-45 to PC or Printer (or to Mobile PC, WolfPack or AdvancedSense w/WolfSense Software)
Touch Screen Display: 3.8" (9.65cm, Monochrome 320x240)
Alarms: Internal, Adjustable Alarm Buzzer, Alarms on Counts, Low Battery, Sensor Failure
Sample Inlet: Isokinetic Sampling Probe
Sample Output: Internally Filtered to HEPA Standards (>99.997% @ 0.3µm)
Vacuum Source: Internal Pump, Automatic Flow Control
Enclosure: High Impact Injection Molded Plastic (with handle)
Power: 100-240V, 50-60Hz
Battery: Li-Ion, Removable & Rechargeable
Dimensions: 8.75" x 5.0" x 2.5" (22.23 x 12.7 x 6.35 cm)
Weight: 2.2lb (1kg)
Environmental Conditions
 Operating: 50°F to 104°F (10°C to 40°C) / 20% RH to 95% RH non-condensing
 Storage: 14°F to 122°F (-10°C to 50°C) / Up to 98% RH non-condensing
Accessories Included:
 Operating manual on CD, Removable battery, Isokinetic Sample Probe (direct mount), Purge (zeroing) Filter, 110/240V AC charger/adaptor, Belt Clip, Wolf-Sense PC Data Analysis Software.

Options:

- GW-3016A** Switchable display from particle counts to mass concentration (µg/m³)
- PC-GW6-KIT** also includes hardshell carrying case, mobile PC interface card and WolfSense PPC (or LAP) Software for interface to mobile PCs.
- PC-GW6-RHCF** Temperature/Relative Humidity Probe 32-122°F (0-50°C), +/- 1°F (0.5°C), 15-90% +/- 2% RH
- WolfSense ARG** Advanced Reporting Software
- PCC-GW6** Hardshell case. Dimensions: 38.1cm x 33.0cm x 17.8cm (15" x 13" x 7")
- ACC-SCCF** Serial interace card for interface to mobile PCs via CF card slot
- WS-PPC** WolfSense application software for PocketPC (order **WS-LAP** for XP/Vista/WIN7 version)

MEASURE SMART

REPORT EFFICIENTLY



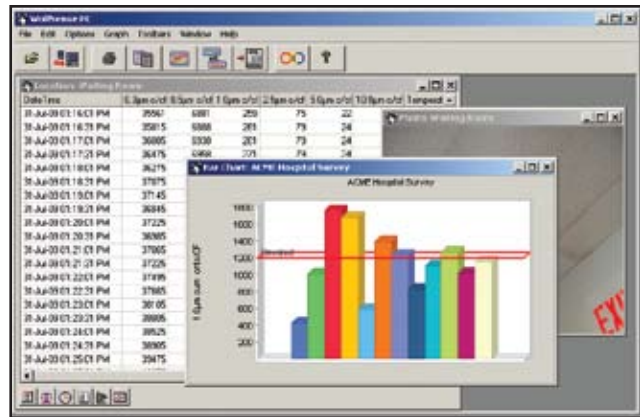
Optional PC-GW6-RHCF %RH, °F/°C probe (removable)



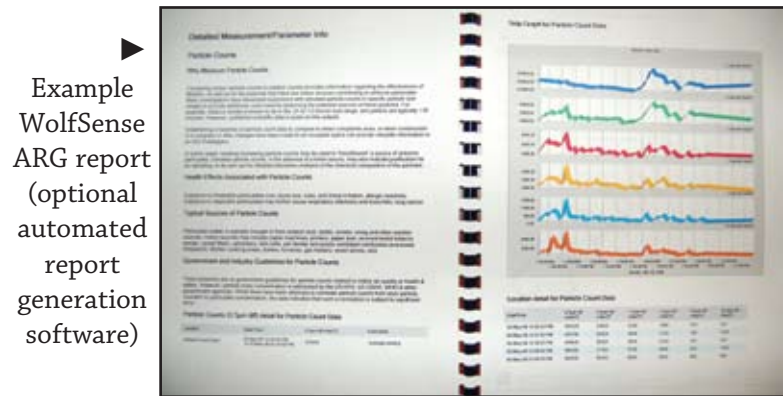
Example Mobile PC Screen (optional interface enables GrayWolf's in-situ documentation features)



PCC-GW6 Hard-Shell Case



Example WolfSense PC Screen data transfer & analysis software (supplied as standard)



Example WolfSense ARG report (optional automated report generation software)



GRAYWOLF SENSING SOLUTIONS

6 RESEARCH DRIVE
 SHELTON, CT 06484 USA
 PH. (1)203-402-0477
 800-218-7997
 FAX: (1)203-402-0478

EMAIL: SALESTEAM@GRAYWOLFSENSING.COM

WWW.GRAYWOLFSENSING.COM

GRAYWOLF SENSING SOLUTIONS

TUAMGRANEY INDUSTRIAL ESTATE
 TUAMGRANEY, CO CLARE, IRELAND
 PH. (353)61921736
 FAX: (353)61921528