



Rental Program

Rent from the Manufacturer (with Up-To-Date **Factory** Calibrations and significant Rebates toward equipment purchase)

1-800-218-7997



DIRECTSENSE TOX Multi-Gas Monitoring Kit
 Weekly Rate: **\$295** Monthly Rate: **\$695**

Includes:

TG-501 Probe, with Temperature sensor*
 (Does NOT include price of specific gas sensors. Choose from below).

-plus-

- PocketPC Display/Datalogger** with 110/240VAC PocketPC Adapter, computer interface cable, and probe adapter
- WolfSense PPC** Application software (installed on PocketPC)
- WolfSense PC** data download, graphing and analysis software
- WolfSense ARG** Advanced Report Generator software
- PCC-PH01** PocketPC case with belt clip and detachable neck strap
- PCC-05IQ** probe pouch with shoulder strap for hands-free, walk-through surveys
- PCC-10P** Hard-shell Security case for in-situ monitoring



SENSORS

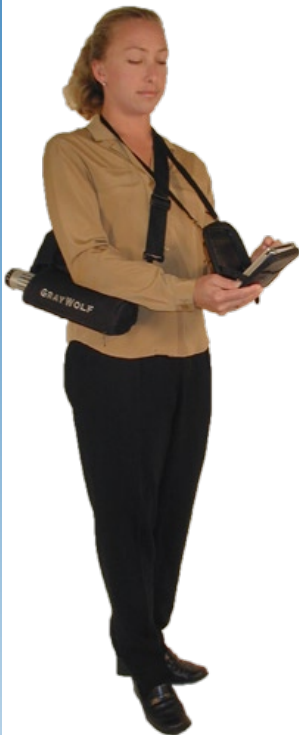
	WEEKLY	MONTHLY
NO₂, SO₂, NO, NH₃, O₂, H₂S, CO, or O₃ (each)	\$145	\$200
HCl, Cl₂, EtO or H₂S/CO combo (each)	\$170	\$250

*Up to 3 additional electrochemical gas sensors may be installed in the TG-502 probe and up to 5 may be installed into the TG-501 probe. Specific sensor availability is limited, inquire regarding availability.

OPTIONS

IQ-410 Probe with CO ₂ , CO, %RH and temperature sensors	\$265	\$725
IQ-610 Probe with ppb VOC, CO ₂ , CO, %RH, °C/°F plus 1 specific gas sensor slot	\$425	\$1150
TG-502H Probe with ppm VOC, %RH, °C/°F plus 3 specific gas sensor slots*	\$325	\$895
AS-201 Telescoping Hotwire Air Velocity probe	\$105	\$295
WolfPack Modular Area Monitor (PCC-16 case substituted)	\$375	\$1095
PC-GW6A-KIT 6-channel Particle Counter, PPC interface (serial) card, hardshell case	\$425	\$1125
PM-205-KIT Thermo Particle Concentration meter with red and blue cyclones, mobile PC (serial) interface card, case	\$595	\$1650
RENT-SUB-PH200 Substitute rugged Pocket PC for standard PPC (additional amount)	\$100	\$225
AD-U4 multi probe adapter & PCC-15PL dual probe case upgrade	\$75	\$200
ACC-APUMP1 Battery powered air pump with belt clip for drawing samples across probe (use together with CA-HD2 listed below)	\$25	\$75
CA-HD2** Gas calibration hood	\$10	\$25
ACC-REG1 Regulator & 2 cylinder hard-shell case	\$15	\$45

****(No gases included; reference gas cylinders are available for sale, not rental)**



PM-205



PH-200



WolfPack



PCC-15

GrayWolf Sensing Solutions
 advanced environmental instrumentation

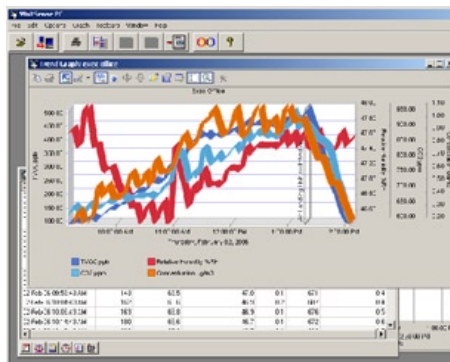
6 Research Drive, Shelton, CT USA Tel: (203) 402-0477 Fax: (203) 402-0478

e-mail: Salesteam@GrayWolfSensing.com

www.GrayWolfSensing.com

Feb 2010

Rental Program



WolfSense PC data transfer software



WolfSense ARG report

WolfSense PC software allows logged data to be down-loaded to your PC for review, graph generation, cut & paste reporting and/or simple export to Excel

WolfSense ARG Advanced Report Generator

A Template Design Wizard walks the user through report set-up:

- Define how to display measured data (CO₂, CO, %RH, Temperature, VOCs, etc).
- Select from a list of government and industry guidelines to include for each parameter.
- Choose from and edit canned text blocks with general IAQ background info.
- Automatically insert notes taken in the field on the mobile PC; text, drawings, photos.
- Create and insert graphs with comments, alarm/guideline lines.
- Add equipment descriptions/specs/photos, probe calibration info, company information/logos and much more

REBATE UPON PURCHASE

Want to buy the equipment that you've rented? Purchase the kit that's been shipped to you and apply 75% of the rental price that you paid (up to a maximum of 75% of the total purchase price) toward the purchase price. In some cases, dependent on the condition of the equipment shipped to you, a "demo/rental equipment discount" may also be available.

Want to send the kit back and order a brand new unit? As long as you order within 6 months from the date that you return your rental kit, you can apply 35% of the rental price that you paid...(up to a maximum of 50% of the total purchase price) toward your purchase.

Security Deposit: Rentals may require a (refundable) security deposit (covering the value of the rental equipment), if appropriate credit terms have not been previously established and maintained with GrayWolf. Allow 10 business days from the time that you supply adequate credit references for a new open account to be set up.

Gray Wolf Sensing Solutions cannot guarantee the availability of rental equipment. The quoted \$US rental pricing is exclusively available to clients in the USA and Canada, and is subject to change. Contact your local distributor for rental pricing and availability in other countries.

GrayWolf Sensing Solutions

advanced environmental instrumentation

6 Research Drive, Shelton, CT USA Tel: (203) 402-0477 Fax: (203) 402-0478

e-mail: Salesteam@GrayWolfSensing.com

www.GrayWolfSensing.com